

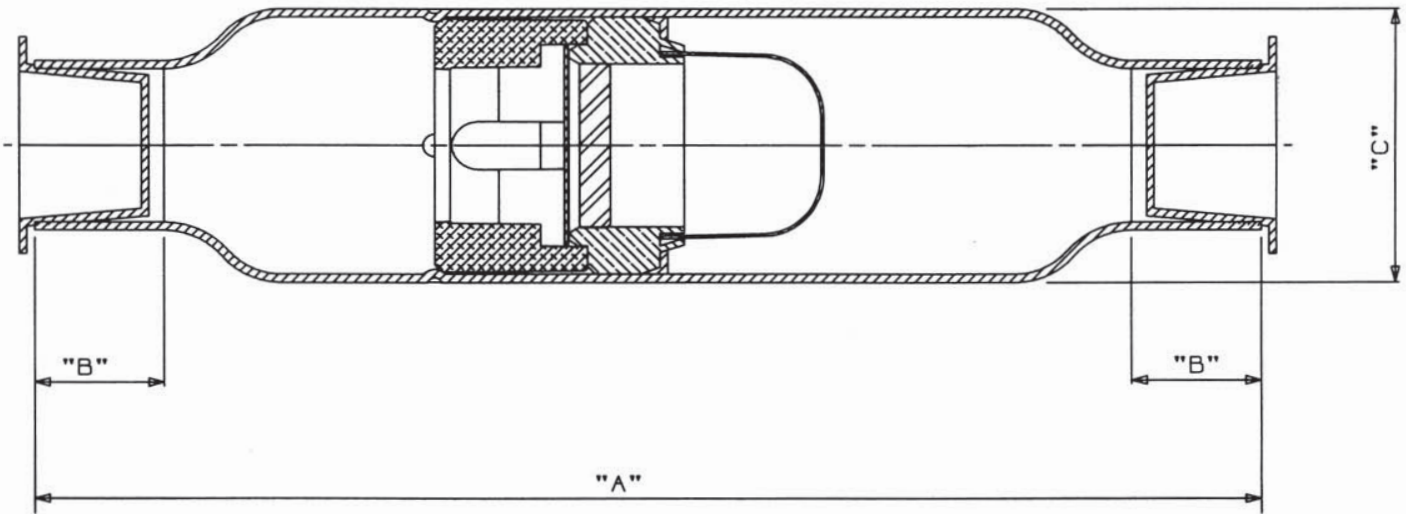
# Superior Catalog

## In-Line Check Valves

### 900MA Series

#### In-Line Check Valve

- Copper connection sizes 1/4" through 2 5/8".
- Full Range of Sizes.
- Minimal Pressure Drop.
- Hermetically sealed spun copper body.
- Magnetic Actuation.
- U.L. and C-U.L. Recognized, File No. SA2989(N)
- 30 mesh screen to protect seat surface from debris.
- Arrow indicates direction of flow.



PART NO. A	CONNECTION (ODS)	"A" $\phi$ CUP SIZE	"B" $\pm .030$	"C" $\pm .125$	"D" $\phi$	OPENING PRESSURE OZ./SQ. IN.	MWP (psig)	BURST PRESSURE (psig)	LEAK RATE CIM @ 60 psi	NOMINAL TONS R22 SUCTION 40°F @ 1 psi	NOMINAL TONS R22 LIQUID 40°F @ 1 psi
900MA-4S	1/4	.252/.256	.31	4.00	.875	1.2	800	4000	<0.015	0.4	2.6
900MA-6S	3/8	.378/.381	.31	4.00	.875	1.3	800	4000	<0.015	0.6	3.1
900MA-8S	1/2	.503/.506	.38	5.00	1.125	3.5	760	3800	<0.034	1.2	9.4
900MA-10S	5/8	.628/.631	.50	5.00	1.125	3.5	760	3800	<0.034	1.4	13
900MA-12S	3/4	.753/.756	.63	7.00	1.625	3.8	700	3000	<0.074	3.3	27
900MA-14S	7/8	.878/.881	.75	7.00	1.625	3.8	700	3000	<0.074	3.7	29
900MA-11S	1 1/8	1.128/1.132	.94	8.38	2.125	6.8	700	3000	<0.122	6.0	51
900MA-13S	1 3/8	1.378/1.382	1.00	9.38	2.625	10.2	700	2900	<0.172	9.5	79
900MA-15S	1 5/8	1.628/1.633	1.09	10.50	3.125	11.4	700	2900	<0.272	17.0	102
900MA-21S	2 1/8	2.128/2.133	1.34	12.00	3.625	18.1	700	2500	<0.386	30.0	213
900MA-25S	2 5/8	2.628/2.633	1.50	13.00	4.125	23.0	700	2300	<0.512	50.0	375

#### Regenerator Check/Muffler

Part No.	Connection	Weight	Diameter	MWP	Burst Pressure	Leak Rate
900RGN-8S	1/2	.80	1.625	700	3500	<0.034