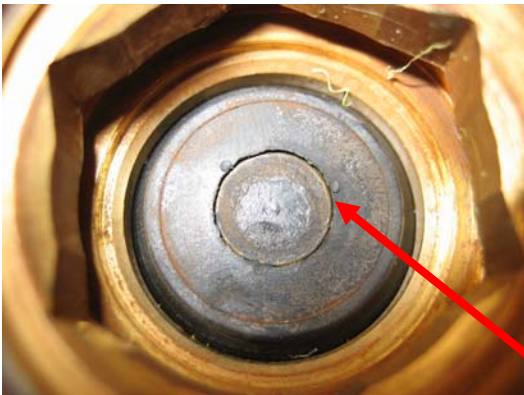




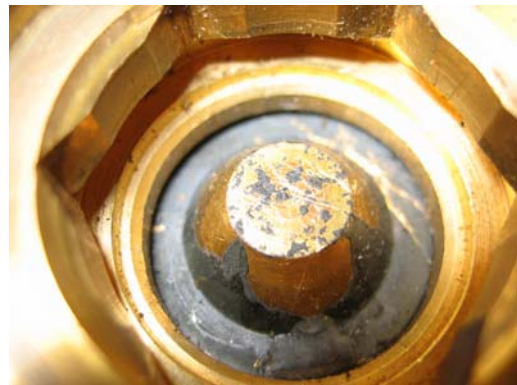
1215/09

SAFETY NOTICE PVE623C FILLER VALVE

Sherwood has become aware of some failures in the PVE623C filler valve installed into refurbished ASME propane tanks. All reported failures have occurred with valves that have either a 3008 or 4308 date code. The failure occurs when the rubber seal is separating from the brass poppet at the time of first fill. The separation may cause leakage of propane gas when the fill hose is disconnected from the valve. See photos below for example of separation. In some cases a gap can be seen between the top of the poppet and the rubber seal (left picture). In other cases, complete separation has occurred where the rubber seal has completely come off the brass poppet (right picture).



Rubber Seal Separating from Brass



Rubber Seal Missing

If the valve is not leaking when the fill hose is disconnected then the valve is functioning correctly. If there is leakage or apparent separation then immediately connect a Sherwood PA901B adapter to the filler valve. The adapter utilizes a secondary check mechanism and can be left in service.

The valve identification stamping and date code are located on the outside of the valve on the diameter above the pipe thread and below the wrench installation hex. See photo below. The interpretation of date code is week/year. The 4308 means the 43rd week of 2008.



Sherwood will provide a PA901B adapter to customers who have PVE623C filler valves with the date codes mentioned above that are currently installed into refurbished tanks. Please contact customer service at 1-888-508-2583 for availability.